

Delta Sigma Pi Dedicates Its New Central



Office Building

The Central Office of
Delta Sigma Pi
330 South Campus Avenue
Oxford, Ohio

DESPITE HEAVY SPRING RAINS The Central Office Building in Oxford, Ohio was appropriately dedicated on Saturday, May 18, with about a hundred fraternity, town and Miami University Officials on hand to witness the ceremonies. Plans had been made to hold the dedication on the steps and lawn in front of the new building, but a downpour, several minutes before the program was to begin, moved the throng into the Alumni Room in the building which proved to be most adequate.

Reverend Howard Gebhart of Oxford opened the program with an invocation and later closed it with a benediction. Keppel O. Small, of Oxford, one of the two architects, presented the Building to Delta Sigma Pi with a few brief remarks relative to its design and the fine manner in which it augments the architectural motif of the Miami University campus of which it is a part. The Building was accepted on behalf of the fraternity by Executive Director J. D. Thomson who also acknowledged the wonderful cooperation that had been afforded Delta Sigma Pi in Oxford, not only by the town officials and Miami University Administration, but also by the local merchants and tradesmen. In conclusion Jim Thomson introduced Grand President J. Harry Feltham of Baltimore, who formally dedicated The Central Office Building to Grand Secretary-Treasurer Emeritus H. G. Wright. He also presented H. G. Wright with a gold master key and fob

appropriately engraved for The Central Office Building. Brother Wright concluded the formal program by accepting the honor bestowed upon him with a few well chosen words. The guests were then invited to inspect the Building and return to the Alumni Room before departing, for refreshments which were served by The Central Office Staff.

Some of the fraternity dignitaries in attendance, in addition to those on the program, were: Past Grand Presidents John L. McKewen, Howard B. Johnson, and Robert G. Busse; Grand Council Members Robert F. Andree, Homer T. Brewer, Frank A. Geraci, E. Coulter Davies, and Franklin A. Tober; Past Grand Council Member Herbert Wehe;



H. G. WRIGHT, Grand Secretary-Treasurer Emeritus, acknowledges the dedication of the Central Office Building to him. Left to right: Reverend Howard Gebhart, Architect Keppel Small, and Grand President J. Harry Feltham look on.



GRAND PRESIDENT J. HARRY FELTHAM (left), wishes Grand Secretary-Treasurer Emeritus H. G. Wright well after having dedicated the Building to him.

and District Director Charles Schnabel. A Pink Poodle party was also held in conjunction with the dedication at Lillian Thomson's home with Pink Poodles Betty Feltham, Loretta Geraci, Ada Hales, Marie McKewen, Ruth Ramsen, Alice Wright and Mary Belle Wright in attendance.

Although the idea of Delta Sigma Pi having its own Central Office building was in existence for many years, little was done about it until 1949 when the late Allen L. Fowler, then Grand President persuaded the Grand Council to create a Central Office Building Reserve Fund for the eventual construction of

such a building. This Fund grew slowly with small appropriations being made each year from the general operations of the Fraternity. In 1954 the thought of a Central Office Building sprung to life when the Grand Council was seeking some suitable way to recognize H. G. Wright, who had served as Executive Director and administrator of The Central Office for some 30 years and who anticipated retiring in 1955. The decision was made in the summer of 1954 to proceed with the construction of a building after an investigation had proven that it was feasible and desirable. The next year was a busy one, with the creation of enabling legislation, the search for a suitable location, the campaign for funds, and the development of construction plans. By the fall of 1955 and the 20th Grand Chapter Congress all of the preliminary problems were solved, financing was well along, drawings completed, and bids received. It was then that the contracts were let and announcements were made to the effect that the new building would be dedicated to H. G. Wright, just designated as Delta Sigma Pi's Grand Secretary-Treasurer Emeritus. One year later The Central Office was moved from Chicago to its new quarters in Oxford. Just in time to appropriately mark the Fraternity's 50th year of existence. The \$95,000.00 building is truly a symbol of 50 years of growth and progress.



ARCHITECT KEPPEL O. SMALL points out some of the fine features of the new Central Office Building on the occasion of the dedication in Oxford.



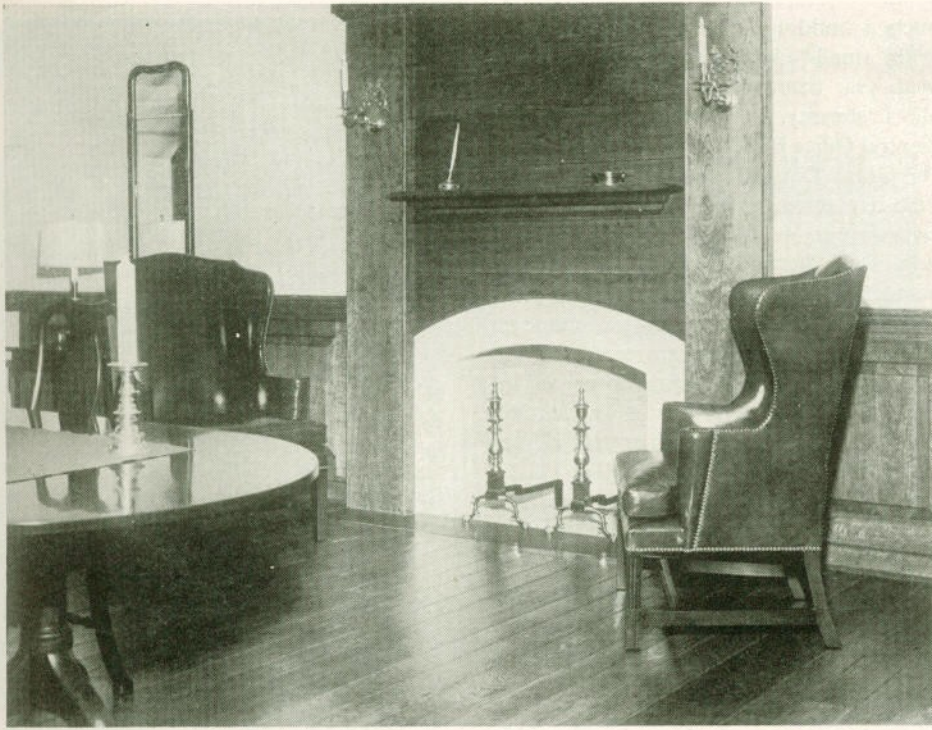
EXECUTIVE DIRECTOR J. D. THOMSON welcomes the guests and acknowledges the cooperation received from many people responsible for the new Central Office Building on the day of the dedication. Those to his left are: Grand Secretary-Treasurer H. G. Wright (concealed), Grand President J. Harry Feltham, Architect Keppel O. Small, and Reverend Howard Gebhart.



A PORTION OF THE CROWD in attendance at the dedication ceremonies applaud one of the addresses made in the Alumni Room of the Building.



GRAND PRESIDENT J. HARRY FELTHAM dedicates the new Central Office Building in May while Reverend Gebhart of Oxford looks on.



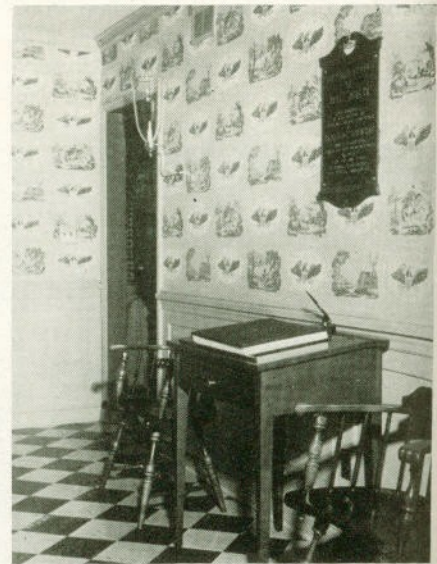
The new Central Office Building is located at 330 South Campus Avenue in Oxford directly across the street from the Miami University Campus. The building itself is of colonial brick and of modified Georgian design in keeping with the motif of Miami University structures. The grounds surrounding the building are expertly landscaped and consist of almost an acre in size. Entering the double colonial doors at the front and center of the building one is impressed by the paneled

foyer with its Colonial staircase and Williamsburg lighting fixtures. The left wing of the building houses the addressograph and records room, a mail and duplicating room, with a walk-in vault for jewelry and supplies, and a receiving and shipping platform on the back of the building. The hallway connecting these two rooms is flanked with supply and maintenance closets and the men's washroom. A ladies' lounge and washroom is situated in the exact center of the first floor easily ac-

cessible from all parts of the building. The right wing of the building contains a large general secretarial office and private offices for the Executive Director and Executive Secretary. Although there are three floors, it is interesting to note that the entire operation of The Central Office has been incorporated into the main floor of the building.

The colonial staircase to the second floor is an indication of what you will find there. Behind two stained cherry doors is the Founders' Room which serves as the Grand Council and Executive Committee meeting place as well as the Fraternity library and archives room. The room is of authentic Williamsburg design with all furnishings and appointments being reproductions from there. All of the paneling and cabinets are made of solid cherry wood and have a hand rubbed finish which gives this room a very rich appearance. This room is one of the outstanding features of The Central Office Building, and one that is hard to beat when it comes to design, furnishings and quality.

The balance of the second floor contains two guest rooms, finely furnished with colonial pieces, and bathroom and storage closet facilities.



THE FOYER of the new Central Office Building carries out the colonial motif of the entire structure.

UPPER LEFT—Founders' Room in the new Central Office Building serves as a Grand Council Meeting Room, Library and Archives Room. It is completely furnished with Williamsburg reproductions.

LOWER LEFT—Executive Director Jim Thomson's office has the same colonial furnishings that were purchased when The Central Office was established in Chicago in 1926.



Every square inch of space in the basement has likewise been put to good use. The largest part of it is devoted to a meeting room, which has a large colonial fireplace, lighting fixtures and other appointments which carry out the theme of the building. In conjunction with this meeting room are toilet facilities, a service kitchen and a large hallway with a separate outside entrance. This group of rooms provides complete facilities for meetings, and in addition to being used for fraternity functions it has been made available to the community and is used by various civic groups.



THIS BEAUTIFUL colonial staircase greets a visitor when he enters the front door. Jim Thomson and Ray Flodin pause at the bottom of it for a small conference.

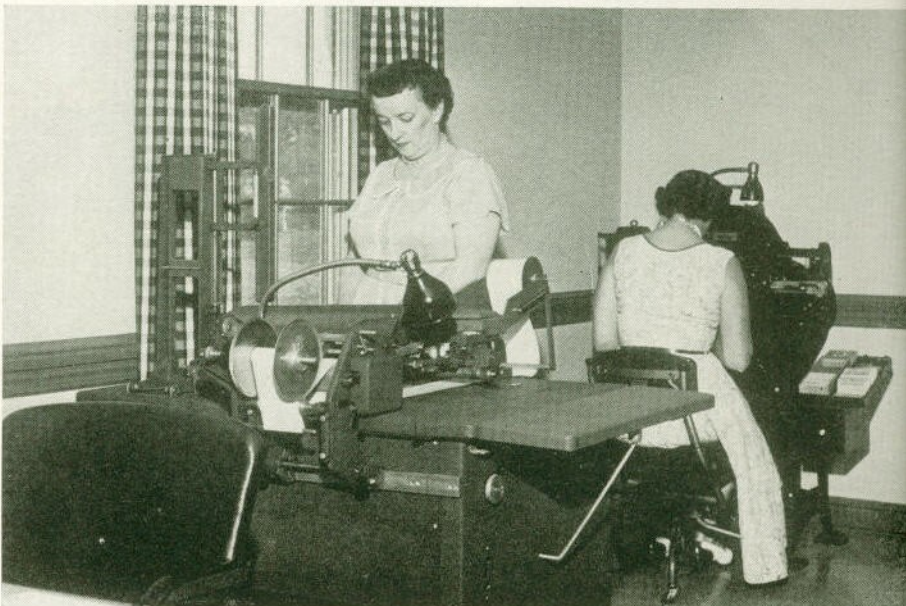
The balance of the basement consists of a maintenance and furnace room and a supply storage room with an outside entrance and ramp.

The building and grounds which are complete to the last detail provide Delta Sigma Pi with not only one of the most attractive national headquarters in the fraternity world, but also facilities that should make its Central Office operation one of the most efficient and economical.

UPPER RIGHT—The General Secretarial Office with modern gray steel furnishings blending with the colonial background. Pictured are, left to right, Jane Lehman, Ray Flodin, and Jane Nelson.

MIDDLE RIGHT—The Mail and Duplicating Room with all of the equipment to handle the shipment of supplies and large mailings to the fraternity. Pictured are, left to right, Jane Lehman and Peg Whitelaw.

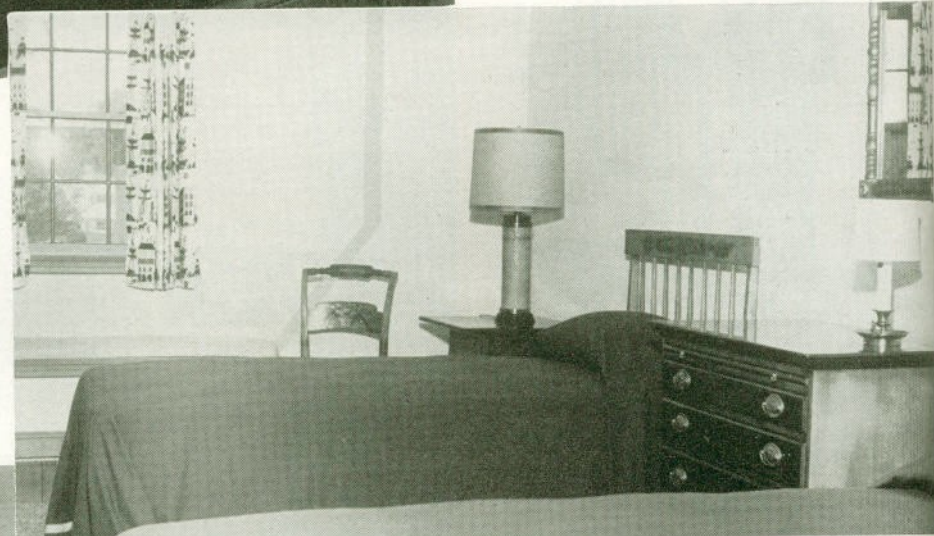
LOWER RIGHT—Some of the machinery in the Records Room which makes plates and addresses envelopes. Pictured, left to right, Helen Schocke and Jane Nelson.





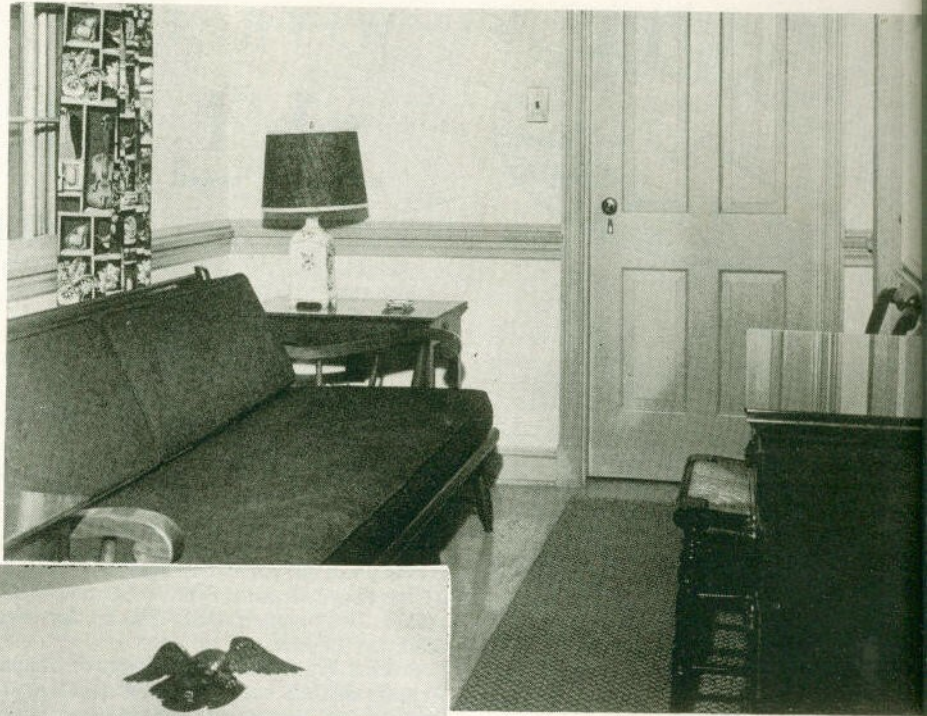
EXECUTIVE SECRETARY Ray Flodin does his work in an office furnished in a colonial motif.

ONE OF TWO GUEST ROOMS for visiting officials in the new Central Office Building.



A CORNER OF THE RECORDS ROOM with its alphabetical list of members, over 40,000 Addressograph plates and geographical card file is an important part of the Central Office Operation. Pictured is Jane Nelson at the Addressograph file.

A REST ROOM for the ladies at The Central Office carries out the pleasant colonial decor of the Building.



THE ALUMNI ROOM of the new Central Office is sufficiently large to accommodate about a hundred people at a meeting.



A STAFF MEETING in the Founders' Room of the new Central Office Building. Pictured are (left to right): Jane Nelson, Jane Lehman, Ray Flodin, Helen Schocke, Peg Whitelaw and Jim Thomson.